

## WALKER BAY FYNBOS CONSERVANCY

### FIRE REACTION PLAN

#### 1. Fire Reaction Team

The Fire Reaction team consists of:

##### Fire Boss

Thilivhali Murivhami (fire chief) – 079 947 8745

Sean Privett (chairman) – 082 4111 008

Roger Bailey – 082 564 0546

Georges Schwegler – 082 901 7650

The **Incident Commander** or control officer is responsible for mobilizing the fire reaction team and is in full control of all activities on the fire scene. In situations where support fire services are involved, the fire boss will cooperate as part of the bigger team. The position of the fire boss will be rotated according to the number of available members during the fire season. The **Fire Manager** will take on the responsibility outside the fire season.

The duties of the fire boss will be to:

- Be contactable at all times during a fire in the conservancy
- Instruct and coordinate the actions of the communication officer
- Give a fire status report through to the communication officer after arriving at the fire
- Authorize assistance from outside the conservancy area
- Control the fire until assistance arrives
- Assist authorities in controlling the fire where necessary
- Keep the communication officer informed of all actions during the fire
- Draft a detailed fire report and conduct a debriefing after the fire

##### Communication officer

Grootbos Private Nature Reserve – Reception 028 384 8000

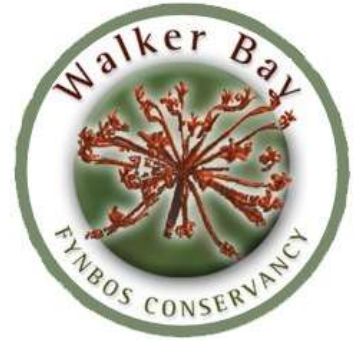
The communication officer will be responsible for relaying all instructions and feedback on the fire received from the fire boss to all relevant role players.

The communication officer will:

- Be under the direct supervision of the fire boss
- Remain in telephonic and radio contact with the fire boss and relevant role players at a given point for the duration of the fire.
- Inform the Overstrand Municipality Fire Brigade, Greater Overberg Fire Protection Association and relevant landowner/s.
- Report weather information and updates to fire boss
- Liaise with other landowners and authorities for equipment and personnel
- Handle any press and fire related enquiries
- Keep records of fire reports and decisions taken

##### Fire Crew

The fire crew will be made up of a trained team of fire fighters who will be answerable directly to the fire control officer or an authorised assistant delegated to the task by the fire boss, should the need arise. The size of the fire crew should be determined by the fire working group in conjunction with the fire boss.



The fire crew will be responsible for:

- Manning the fire vehicles
- Physical extinguishing of fires
- Patrolling the pre- and post-fire lines

### **Essential fire fighting equipment**

A bakkie firefighting unit is stored on Lomond Wine Estate and Mosaic Private Sanctuary. The landowner, in conjunction with the Conservation Manager, is responsible for checking that all components work and is required to return the bakkie unit in good working order and with a full tank of fuel. Any defects are to be reported to the Conservation Manager. The Conservation Manager is to check that all components are in good working order once the Bakkie Unit has been returned. The landowner who made use of the Bakkie Unit, will be responsible for paying for the repairs.

Contact person: Thilivhali Murivhami (Conservation Manger) 079 947 8745

Wayne Gabb (Lomond Wine Estate) 082 5524 124

Marcelino Henckert (Mosaic Private Sanctuary) 082 825 3211

### **Maintenance**

Ensure that all the following have been effectively maintained:

- Firebreaks
- Access roads
- Water points
- Firefighting equipment

### **Training**

Ensure that all relevant role players are sufficiently trained with refresher courses where necessary, in fire fighting methods and procedures.

Hold regular training exercises, with special reference to reaction response and equipment handling.

The Conservation Manager must keep a record of all people who have attended training sessions.

### **Essential equipment and gear**

Ensure that all the necessary essential fire fighting equipment and gear are readily available and in a sound operating condition.

### **Fire management units**

The Conservancy has been divided into the following Fire Management Units.

#### **1. EAST FMU**

##### **Main Contact Person: Name; Details**

- Lomond
- Avuka
- Farm 215
- Heidehof
- Goedvertrouw
- Hartebeespoort

## 2. CENTRAL FMU

### Main Contact Person: Name; Details

- Bellavista
- Grootbos Private Nature Reserve
- Bhodi khaya
- Witkrans Morgan
- Witkrans Privett
- Windheuwel
- Flower Valley
- Bhungani
- Witvoetskloof
- Helderfontein
- Southern Blooms
- Molteno Brothers
- Pinnacle
- Koude Vlakte

## 3. WEST FMU

### Main Contact Person: Name; Contact Details

- Mosaic
- Wortelgat
- Landen Hill
- Rainbow Private Nature Reserve
- Wolwefontein Private Nature Reserve
- Dune Yonder

### Reporting the Fire:

1. The observer must notify the communication officer (Grootbos Lodge) immediately, reporting the location and size of the fire, the wind direction, whether people, infrastructure, livestock or crops are threatened, rate of spread

2. The communications officer must notify the fire [manager/representative](#) boss.

3. The fire boss must

- instruct the communication officer to notify the other available conservancy members who can assist with the fire

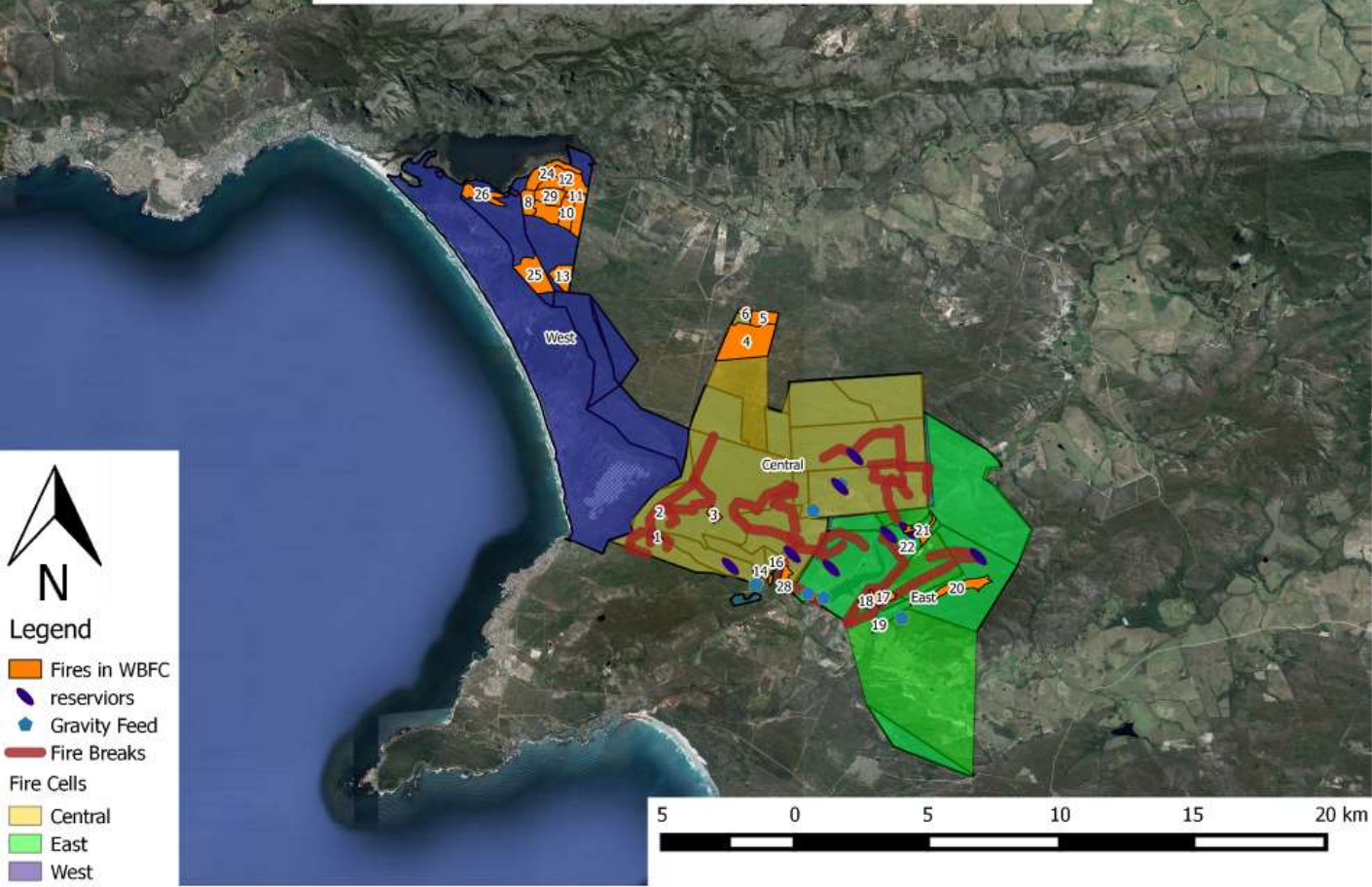
-instruct the communication officer to report the fire to

1. Overstand Fire Department 028 312 2400

2. Greater Overberg Fire Protection Association: 028 425 1690 (ext. 216)

(Relevant parties to be contacted by the GOFPA)

# WALKER BAY FYNBOS CONSERVANCY Fire Management Units



## Walker Bay Fynbos Conservancy Contact List

FARM NAME	CONTACT PERSON	CONTACT NO.	EMAIL/ WEBSITE
Avuka			<a href="mailto:benlomondborderdery@gmail.com">benlomondborderdery@gmail.com</a>
Bellavista (Waterkop)	Georges Schwegler	T. 028 341 0178 C. 082 901 7650 F. 028 341 0170	<a href="mailto:bellavista@hermanus.co.za">bellavista@hermanus.co.za</a> <a href="http://www.bella.co.za">www.bella.co.za</a>
Bhungani Farm	Anthony & Angela Wain	H. 021 794 3402 F. 021 418 0510 C. 082 455 3291	awain@mweb.co.za
Bodhi Kaya	Georgina Hamilton  Warren Stegmann	T. 028 388 0156 F. 028 388 0177	info@bkr.co.za www.bodhi-khaya.co.za <a href="mailto:warrenstegmann@me.com">warrenstegmann@me.com</a>
Brown Dog Farm	Trevor Penney  Annett Schirmer	T: 082 667 9232	trevorpenney@gmail.com
Dune Yonder	Val & Tim Deverson		deverson.valandtim@gmail.com
Farm 215	Maarten Groos	T. 028 388 0920 C. 082 097 1655	maarten@farm215.co.za www.farm215.co.za
Flower Valley Conservation Trust	Lesley Richardson  Roger Bailey	T. 028 425 2218 F. 028 425 2855 C. 082 329 0246 T. 028 388 0713	lesley@flowervalley.co.za  rbailey@flowervalley.co.za <a href="http://www.flowervalley.org.za">www.flowervalley.org.za</a>
Goedvertrouw	Danie & May de Villiers	T. 028 388 0272 F. 086 607 1946 C. 082 554 1762	djj.devilliers@gmail.com
Grootbos Private Nature Reserve	Sean Privett  Michael/Tertius Lutzeyer	T. 028 384 8048 C. 082 4111 008 F. 028 384 8100 T. 028 384 8000/1 F. 028 384 8042	sean@privett.co.za  tertius@grootbos.co.za  <a href="http://www.grootbos.com">www.grootbos.com</a>
Heidehof Private Nature Reserve	Mathia & Walter Schwegler	T. 028 388 0073 C. 082 901 5070 (Walter) C. 072 798 7181 (Mathia)	schwegler@telkomsa.net
Helderfontein	Amanda Botha	T. 021 887 2209 M. 081 270 1556 F. 021 808 3607	atheo.botha@gmail.com
Koude Vlakte	Simon & Shawn Graaff	H. 021 882 8701 C. 073 315 6027	<a href="mailto:Simon.graaff@gmail.com">Simon.graaff@gmail.com</a> <a href="mailto:shawngraaff@gmail.com">shawngraaff@gmail.com</a>
Landen Hill	Eddie & Silvana Burger	T. 028 388 0983 C. 083 2704 808	silvana@burmar.co.za eddie@burmar.co.za
Lomond Wine Estate	Wayne Gabb	T. 028 388 0095 F. 028 388 0130	wayne@biogrow.co.za www.lomond.co.za
Molteno Brothers Trust	Ian Moodie	T. 021 859 2527 F. 021 859 4893	info@moltenobros.co.za imm@moltenobros.co.za

Mosaic Farm	Breese & Kathryn Johnson  Marcelino Henckert	T. 028 313 2814 C. 082 825 3211  C. 082 825 3211	info@mosaicfarm.net kathryn@mosaicsothafrika.com breesej@bellsouth.net marcelino@mosaicsothafrika.com <a href="http://www.mosaicsothafrika.com">www.mosaicsothafrika.com</a>
Pinnacle	Dominic van Schouwen	C. 082 331 3962	dvanschouwen@gmail.com
Rainbow Private Nature Reserve	Lutz & Karin Kettner	T. 028 312 3461 F. 028 312 4087	Lutz.kettner@itec.co.za
Southern Blooms	Robert Fraser Henrietta Hamilton		fraser.bank@gmail.com hvhamilton@gmail.com
Walker Bay Nature Reserve (Cape Nature)	Deon Geldenhuys  Lauren Waller	T. 028 314 0062  C. 082 496 3395 F. 028 314 1814 C. 082 309 1188	dgeldenhuys@capenature.co.za  lwaller@capenature.co.za <a href="http://www.capenature.co.za/reserves.htm?reserve=Walker+Bay+Nature+Reserve">http://www.capenature.co.za/reserves.htm?reserve=Walker+Bay+Nature+Reserve</a>
Windheuwel	Franz Birkholtz	T. 012 644 2641 C. 082 929 8043	fbirkholtz@gmail.com
Witkrans (698)	Rod Morgan	T (011) 656-9889 C 083-267-4137 F (011) 802-2465	mkaya@iafrica.com
Witkrans (697/1)	Sean & Michelle Privett	C. 082 4111 008 C. 082 464 5115	sean@privett.co.za michelle@privett.co.za <a href="http://www.witkrans.com">www.witkrans.com</a>
Wolwefontein Private Nature Reserve	Italo & Dulcie Martinengo	W. 028 384 0086 H. 028 384 1045 C. 082 326 3904 F. 028 384 0086	italo@gamco-sa.co.za dulciem@vodamail.co.za
Wortelgat (See-Eike Trust)	David Hofmeyr Marius Boucher	C.082 771 6660 T. 028 3410666 C. 082 7716660	dgmhofmeyr@gmail.com